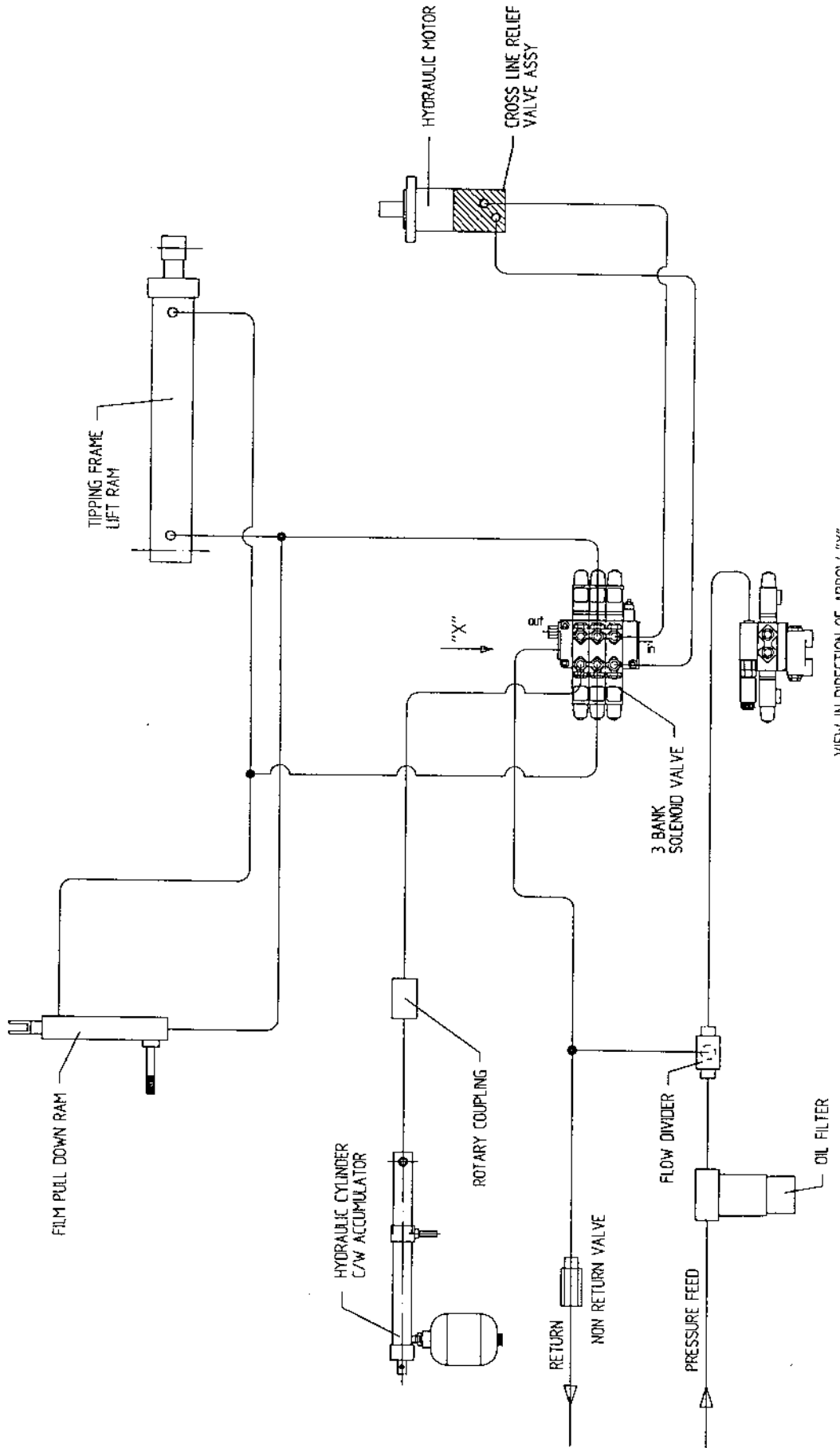
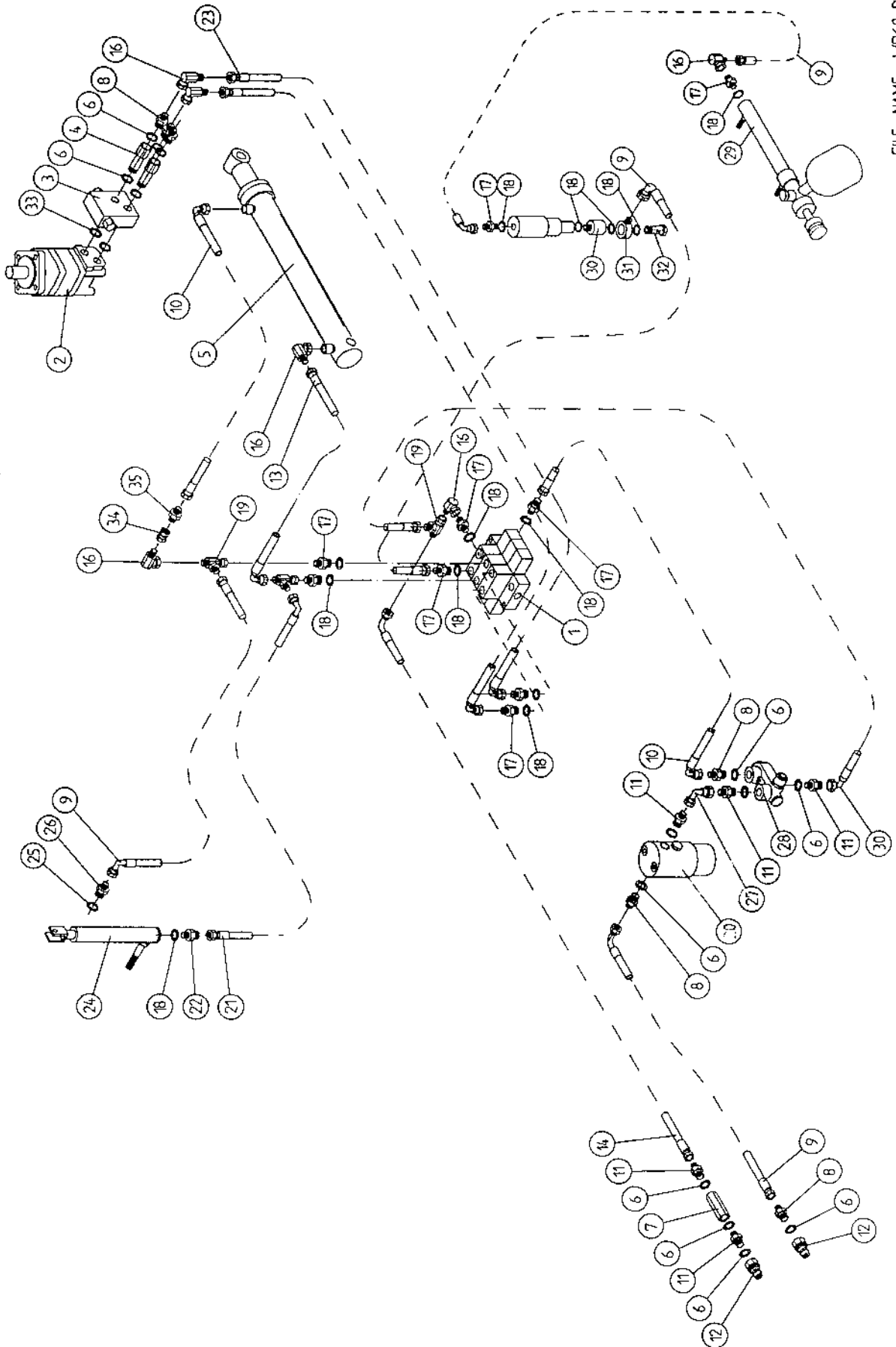


TANCO AUTOWRAP 280 ARC MODEL HYDRAULIC CIRCUIT DIAGRAM



VIEW IN DIRECTION OF ARROW "X"

TANCO AUTOWRAP 280 ARC MODEL
HYDRAULIC COMPONENTS



FILE NAME: WD68-PL50

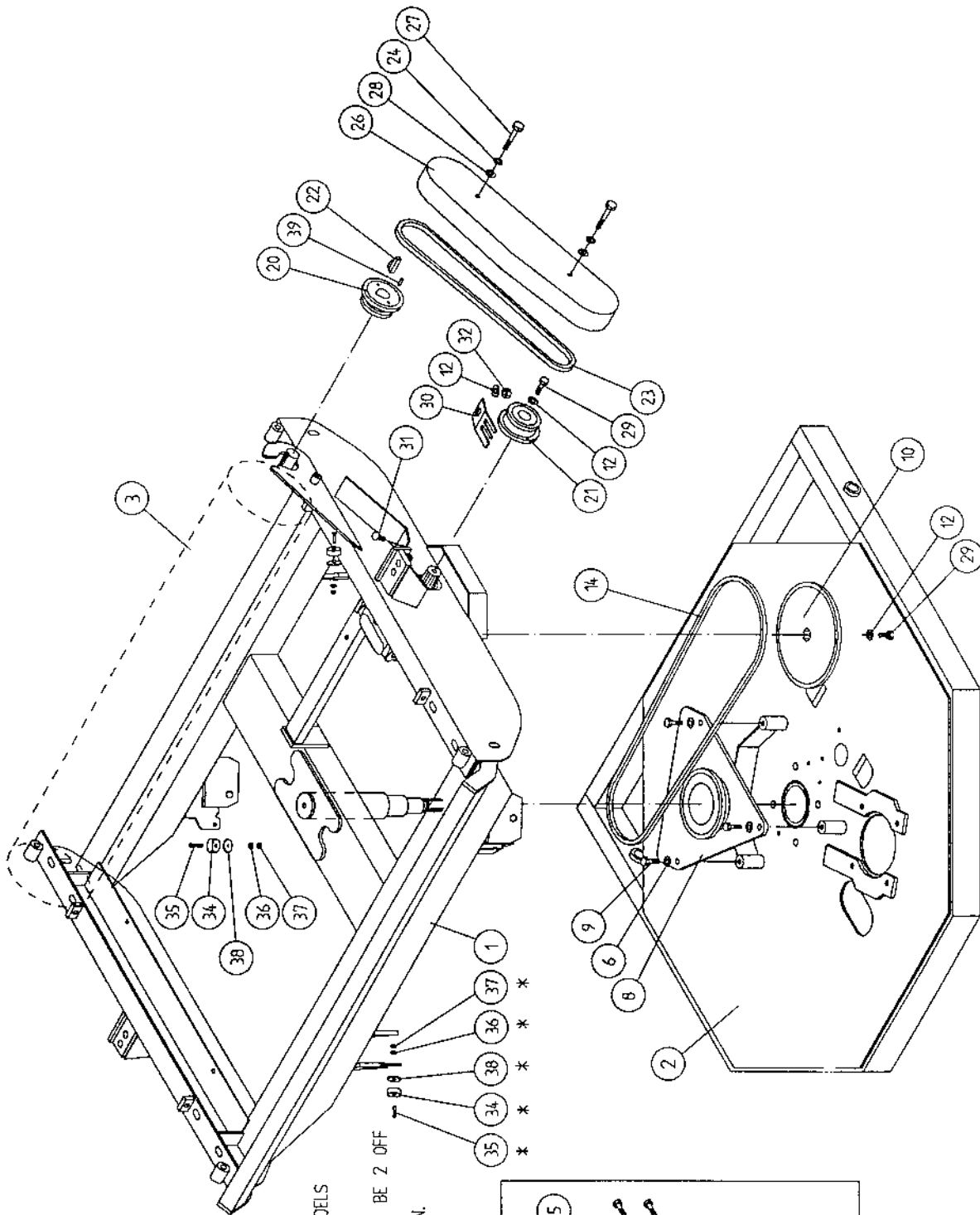
TANCO AUTOWRAP 280 ARC MODELS
HYDRAULIC COMPONENTS

PARTS LIST

ITEM NO.	DESCRIPTION	QTY.	PART-NO.
1	3 BANK SPOOL SOLENOID VALVE	1	Z01-03-A250
2	HYDRAULIC MOTOR (C.L.)	1	Z01-02-RF200
2A	SEAL KIT FOR ABOVE	1	Z01-RF200
3	CROSS LINE RELIEF VALVE	1	Z01-03-004
4	1/2" B.S.P. BOTTOM BANJO BOLT (SPECIAL)	2	Z01-18-081
5	HYD. RAM (TIPPING FRAME)	1	Z01-01-AR687
5A	SEAL KIT FOR ABOVE RAM	1	Z01-Z01
6	1/2" DOWTY WASHER	13	Z01-04-03
7	1/2" NON RETURN VALVE	1	Z01-03-017
8	1/2" x 3/8" ADAPTOR	4	Z01-06-06-08
9	84" ST/90 3/8" D/W HOSE	3	Z38-R2-84-S9
10	48" ST/90 3/8" D/W HOSE	2	Z38-R2-48-S9
11	1/2" x 1/2" ADAPTOR	4	Z01-06-08-08
12	1/2" MALE END Q/R COUPLING	2	Z01-15-081
13	36" ST/90 3/8" D/W HOSE	1	Z38-R2-36-S9
14	96" ST/90 1/2" D/W HOSE	1	Z12-RI-96-S9
15	24" ST/90 3/8" D/W HOSE	1	Z38-R2-24-S9
16	3/8" MALE/FEMALE 90 ELBOW	6	Z01-14-015
17	3/8" x 3/8" ADAPTOR	9	Z01-06-06-06
18	3/8" DOWTY WASHER	13	Z01-04-02
19	3/8" MALE x 3/8" MALE x 3/8" FEMALE T'PIECE	3	Z01-12-002
20	FILTER	1	Z01-24-08
21	84" ST/90 3/8" DIW HOSE	1	Z38-R2-72-S9
22	3/8" x 3/8" ADAPTOR FITTED WITH 0.06" RESTRICTOR	1	Z01-03-40
23	96" ST/90 3/8" D/W HOSE	2	Z38-R2-96-S9
24	HYD RAM D/A (PULL DOWN ARM)	1	Z01-01-AW25
24A	SEAL KIT FOR ABOVE RAM	1	Z01-AW25
25	1/4" DOWTY WASHER	1	Z01-04-01
26	1/4" x 3/8" ADAPTOR	1	Z01-06-04-06
27	1/2" FEMALE 90° ELBOW	1	Z01-14-018
28	INLINE FLOW DIVIDER	1	Z01-03-10-A7
29	CUT & START RAM	1	Z01-01-AWH9
29A	SEAL KIT FOR ABOVE RAM	1	Z01-AWH
30	ROTARY COUPLING	1	Z01-02-AWR
31	3/8" BANJO COUPLING	1	Z01-19-062
32	3/8" SINGLE TOP BANJO BOLT	1	Z01-20-062
33	COPPER WASHER	2	Z01-04-15
34	3/8" FEMALE X 3/8" FEMALE ADAPTOR	1	Z01-05-F6-F6
35	RESTRICTOR 3/8" MALE X 3/8" MALE (2mm Ø)	1	Z01-03-38

TANCO AUTOWRAP

CONSTANT INDEXING DRIVE ASSEMBLY



ITEMS MARKED WITH * ARE POSITIONED ON THIS SIDE OF THE MACHINE ON "S" MODELS AND 1 OFF EACH ITEM IS REQUIRED ONLY.

"A" MACHINES QUANTITY REQUIRED WILL BE 2 OFF EACH ITEM AND ARE POSITIONED AT THE OPPOSITE SIDE OF THE MACHINE AS SHOWN.

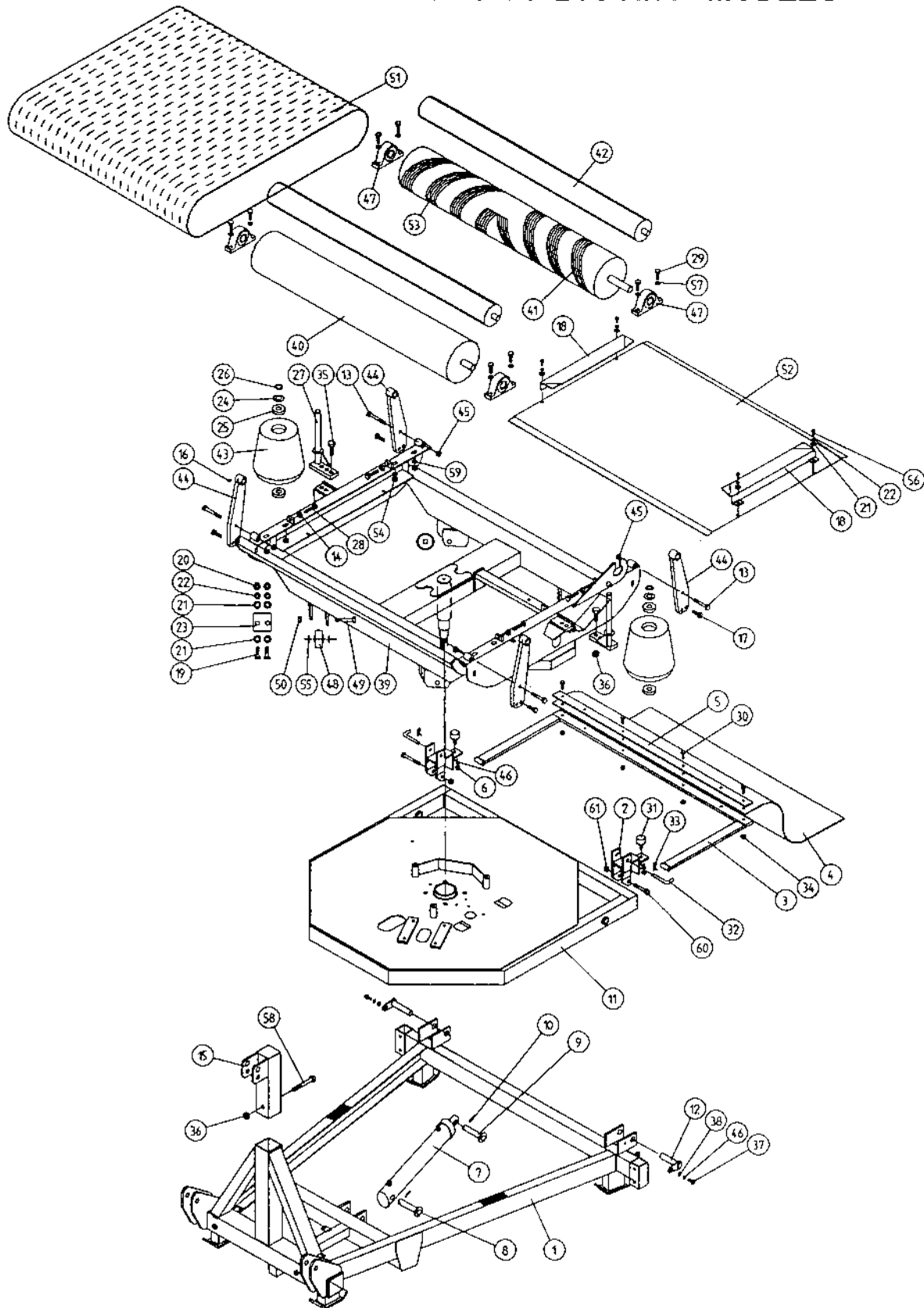
- 35 *
- 34 *
- 38 *
- 36 *
- 37 *

**TANCO AUTOWRAP
CONSTANT INDEXING DRIVE ASSEMBLY
PARTS LIST**

ITEM NO.	DESCRIPTION	QTY	PART NO.
1.	TURNTABLE ASSY	1	WD67-TA
2	TIPPING FRAME ASSY	1	WD67-TF
3	DRIVE ROLLER ASSY	1	WD66-BRD
4	GEAR BOX	1	Z01-25-300
4A	GEAR BOX SEAL KIT	1	Z01-25-300S
5	M12 HEX HD SET 30mm LONG	4	Z26-082S
6	12mm DIA SPRING WASHER	7	Z12-02-12
7	CHAIN TENSIONER	1	WD60-CT
8	CENTRE SPROCKET ASSY 27 TOOTH	1	WD64-CSA
9	M12 HEX HD SET x 25mm LONG	3	Z26-081S
10	46 TOOTH SPROCKET	1	Z06-D64-46S
11	M10 HEX HD SET x 25mm LONG	1	Z26-0611S
12	10mm DIA SPRING WASHER	4	Z12-02-10
13	RETAINING COLLAR	1	WD623-071
14	CHAIN ¾" PITCH x 87 PITCHES	1	Z09-AW-5
15	ROSTA TENSIONING UNIT ARM	1	Z06-454
17	M10 HEX HD BOLT X 65mm LONG	1	Z26-0671B
19	M10 LOCKNUT	1	Z23-10
20	SPROCKET DOUBLE SIMPLEX 13T/16T KEYED	1	Z06-D64-1316K
21	SPROCKET DOUBLE SIMPLEX 13T/16T SPLINED	1	Z06-D65-1316S
22	KEY 5/16" x 5/16" x 32mm LONG	1	WD623-K32
23	CHAIN ¾" PITCH x 6 PITCHES	1	Z09-AW-3
24	½" DIA STAR WASHER	2	Z10-02-121
26	CHAIN GUARD	1	WD67-CGD
27	M10 HEX HD SET x 70mm LONG	2	Z26-068B
28	10mm DIA FLAT WASHER	2	Z10-02-10
29	M10 HEX HD SET x 30mm LONG	2	Z26-062S
30	CHAIN STRIPPER	1	WD67-127
31	M10 CUP SQ. SCREW x 30mm LONG	1	Z13-112
32	M10 HEX NUT	1	Z18-10
34*	MAGNET	2	ZLY-MG
35*	M4 CSK HD SET x 30mm LONG	2	Z13-5-04X30
36*	6mm DIA FLAT WASHER (MUD FLAP)	2	Z11-02-061
37*	M4 LOCKNUT	2	Z23-04
38*	4mm DIA FELT WASHER	2	Z10-03-04
39	SPIRAL PIN	2	Z03-23-062

NOTE: ON "S" MACHINES QUANTITY REQUIRED ON
ITEMS MAREK WITH * WILL BE 1 OFF.

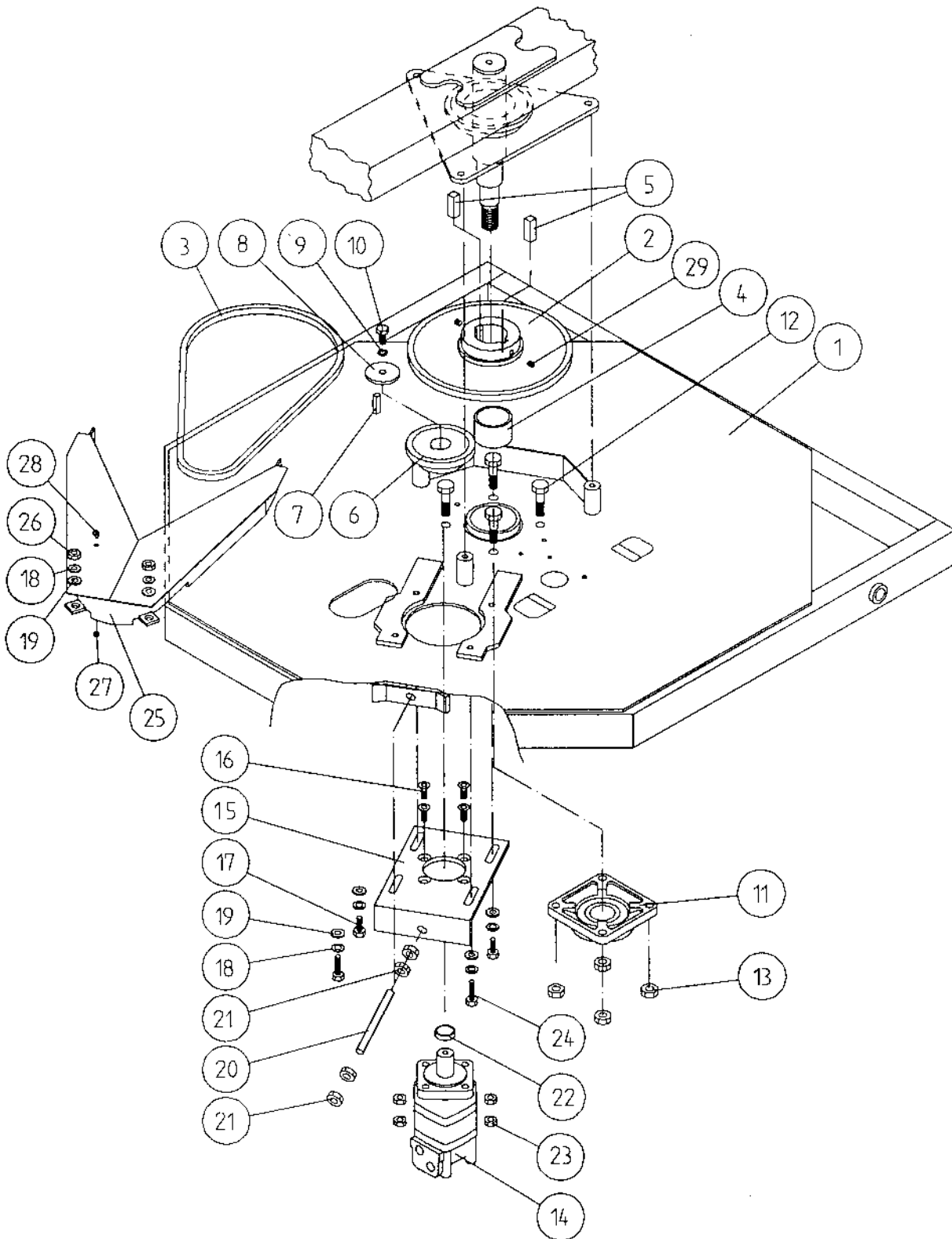
TANCO AUTOWRAP 280 S / 280 ARC MODELS



**TANCO AUTOWRAP 280-S / 280-ARC MODELS
PARTS LIST**

ITEM NO.	DESCRIPTION	QTY	PART NO.
1	3pt LINKAGE FRAME ASSEMBLY	1	WD63-MF1
2	MAT MOUNTING BRACKET	2	WD67-MMB
3	RUBBER MAT MOUNTING FRAME ASSEMBY	1	WD63-MMF
4	RUBBER MAT	1	Z05-02AM
5	CLAMPING PLATE	1	WD63-1300
6	M10 HEX NUT	2	Z18-10
7	HYDRAULIC RAM	1	Z01-01-AR687
8	RAM BOTTOM PIVOT PIN	1	Z03-02-30
9	RAM TOP PIVOT PIN	1	Z03-03-50
10	2" X 1/4" SPLIT PIN	2	Z03-21-29
11	TIPPING FRAME ASSY	1	WD67-TF
12	TIP FRAME PIVOT PIN c/w GREASE NIPPLE	2	Z03-01-905
13	M12 HEX HD BOLT x 80mm LONG	4	Z26-0901B
14	M12 HEX NUT	4	Z16-12
15	TOP LINK BRACKET ASSEMBLY	1	WD610-TLB2
16	1/8" BSP ST GREASE NIPPLE	4	Z39-60
17	M12 HEX HD SET x 40mm LONG	4	Z26-084S
18	BELT GUIDE ASSEMBLY	2	WD66-BG
19	M8 HEX HD SETS x 20mm LONG	4	Z26-039S
20	M8 HEX NUTS	14	Z18-08
21	8mm DIA FLAT WASHERS (MUD FLAP)	8	Z11-02-081
22	8mm DIA SPRING WASHERS	12	Z12-02-08
23	SCRAPER	2	WD60-711
24	THRUST WASHER	2	WD60-292
25	BEARING (25mm I.D)	4	Z06-AWRB-93
26	CIRCLIP	2	Z28-525
27	END ROLLER MOUNTING BRACKET	2	WD66-ERM
28	M12 HEX HD SET x 60mm LONG	4	Z26-088S
29	M14 HEX HD SET x 55mm LONG	8	Z26-105S
30	M8 HEX HD BOLT x 50mm LONG	4	Z26-045B
31	BUFFER 56mm DIA x 40mm LONG	2	Z40-20
32	BISSEL PIN	2	Z03-22-AW100
33	4mm 'R' CLIP	2	Z36-02
34	M8 LOCKNUTS	4	Z23-08
35	M16 HEX HD SET X 50mm LONG	6	Z26-124S
36	M16 LOCKNUTS	3	Z23-16
37	M18 HEX HD SET x 25mm LONG (TUFLOCK)	2	Z26-061S
38	10mm DIA MACHINED FLAT WASHER	2	Z11-02-10
39	TURN TABLE ASSEMBLY	1	WD67-TA
40	BELT ROLLER ASSEMBLY IDLER	1	WD66-BRI
41	BELT ROLLER ASSY DRIVE	1	WD66-BRD
42	SMALL ROLLER ASSEMBLY	2	WD56-SMR
43	SIDE ROLLER	2	Z06-AWR
44	ROLLER MOUNTING BRACKET	4	WD66-RMB
45	M12 LOCKNUTS	8	Z23-12
46	10mm SPRING WASHERS	6	Z12-02-10
47	1 1/4" PILLOW BLOCK BEARING c/w CAM LOCK	4	Z06-485
48	SUPPORT WHEELS (4" DIA)	4	Z06-466W
49	AXLE ASSY c/w GREASE NIPPLE	4	Z03-22-AW/AX
50	M20 LOCKNUTS	4	Z23-20
51	1200 WIDE x 2475mm LONG x 1/4" FLAT BELT	1	Z05-02AW96
52	TURNTABLE COVER PLATE	1	WD66-024
53	GRIP FACE KIT	1	Z05-02-AW49
54	M14 HEX NUT	4	Z18-14
55	SPACER	8	WD67-101
56	M8 HEX HD SET x 30mm LONG	4	Z26-041S
57	14mm DIA FLAT WASHER	8	Z11-02-14
58	M16 HEX HD BOLT x 120mm LONG	1	Z26-134B
59	14mm DIA SPRING WASHER	4	Z12-02-14
60	M10 X 90mm BOLTS	2	Z26-070B

TANCO AUTOWRAP TURNTABLE CHAIN DRIVE ASSEMBLY



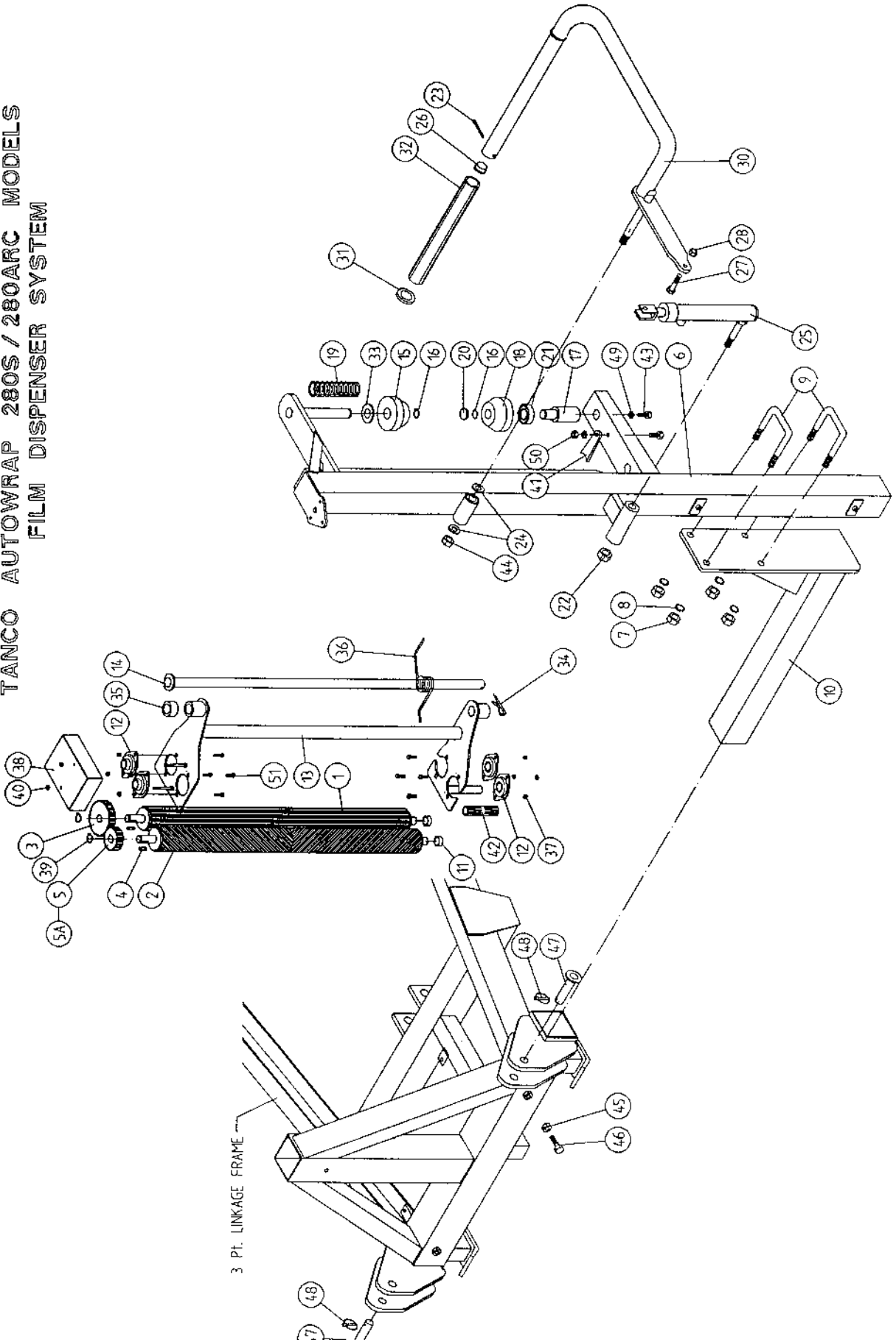
FILE NAME: WD66 PL9

**TANCO AUTOWRAP
TURNTABLE CHAIN DRIVE ASSEMBLY**

PARTS LIST

ITEM NO	DESCRIPTION	QTY	PAPT NO
1	TIPPING FRAME ASSY	1	WD67-TF
2	38 TOOTH x 1" PITCH SPROCKET	1	Z06-D64-38
3	CHAIN 1" PITCH x 54 PITCHES	1	Z09-AW6
4	SPINDLE SPACER	1	WD64-040
5	KEY 5/8" SQ x 50mm LONG	2	WD64-052
6	15 TOOTH x 1" PITCH SPROCKET	1	Z06-I60-046
7	KEY 5/16" SQ x 45mm LONG	1	WD64-053
8	LOCKING COLLAR	1	WD623-071
9	10mm DIA SPRING WASHER	1	Z12-02-10
10	3/8" UNC HEX HD SET x 1" LONG	1	Z27-023S
11	2" DIA FLANGE BEARING C/W CAM LOCK COLLAR	1	Z06-49EC
12	5/8" UNF HEX HD SET x 2" LONG	4	Z31B-064
13	5/8" UNF LOCKNUT	4	Z20-10
14	HYDRAULIC MOTOR	1	Z01-02-RF200
15	HYDRAULIC MOTOR MOUNTING PLATE	1	WD64-001
16	M12 x 50mm ALLEN HD O/S SCREW	4	Z13-5-12X50
17	M12 HEX HD SET x 30mm LONG	4	Z26-082S
18	12mm DIA SPRING WASHER	4	Z12-02-12
19	12mm DIA FLAT WASHER	4	Z10-02-12
20	M16 THREADED BAR x 150mm LONG	1	WD64-038
21	M16 HEX NUT	4	Z18-16
22	SPACER	1	Wi60-093
23	M12 LOCKNUTS	4	Z23-12
24	M12 HEX HD SET x 50mm LONG	2	Z26-086S
25	DRIVE CHAIN GUARD	2	WD66-DCG
26	M12 HEX NUT	2	Z18-12
27	M6 HEX NUT	1	Z18-06
28	M6 90 DEGREE GREASE NIPPLE	1	Z39-65
29	M12 GRUB SCREW x 16mm LONG	2	Z28-012

TANCO AUTOWRAP 280S / 280ARC MODELS
 FILM DISPENSER SYSTEM

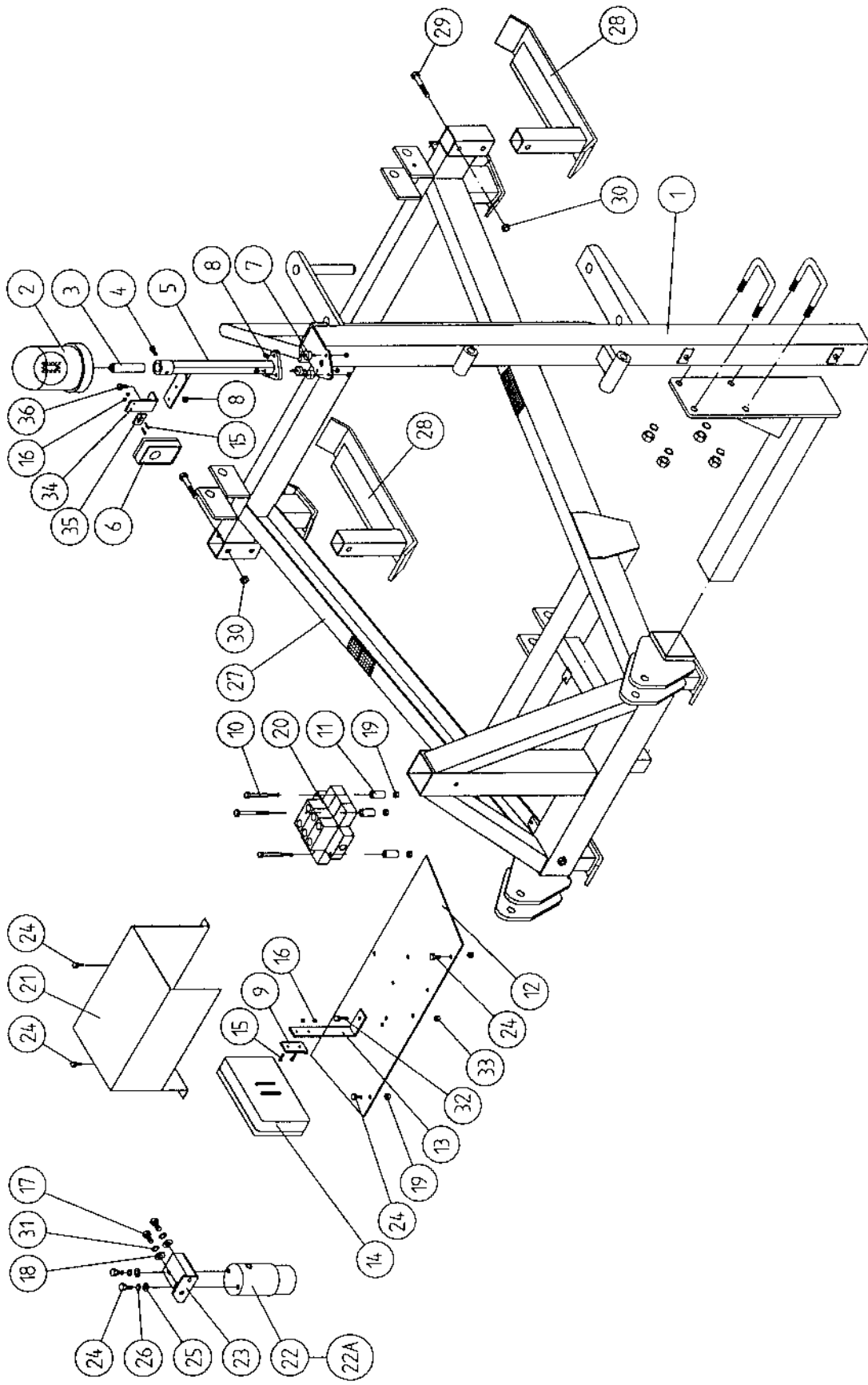


FILE NAME W095PL25

**TANCO AUTOWRAP 280-S/280-SL/280-ARC MODELS
FILM DISPENSING SYSTEM
PARTS LIST**

ITEM NO.	DESCRIPTION	QTY	PART NO.
1	INNER ROLLER ASSY	1	D617-IRA1
2	OUTER ROLLER ASSY	1	D617-ORA
3	60 T GEAR	1	D617-G60
4	6mm SQ KEY STEEL x 20mm LONG	2	WD67-KS20
5	39 T GEAR - 55% STRETCH	1	D617-G39
5A	35 T GEAR - 70% STRETCH	1	D617-G35
6	DISPENSER MAST	1	WD617-DM
7	M16 HEX NUT	4	Z18-16
8	16mm DIA SPRING WASHER	4	Z12-02-16
9	M16 'U' BOLTS	2	Z35-52
10	DISPENSER MAST MOUNTING BRACKET	1	WD63-DMM2
11	3/4" x 10mm SPACER	2	D617-026
12	RHP SLF20A BEARING	4	Z06-17
13	FILM DISPENSER MAIN FRAME	1	WD617-FDMS
14	PIVOT PIN	1	WD617-PP1
15	TOP CONE	1	WD90-012
16	CIRCLIP	2	Z28-525
17	FILM SPOOL LOWER	1	WD617-013
18	BOTTOM CONE	1	WD90-013
19	SPRING	1	Z07-07
20	PLASTIC CAP 1 1/4" DIA	1	Z39-60
21	BEARING	1	Z06-AWRB
22	M16 LOCKNUT	2	Z23-16
23	1/4" X 2" SPLIT PIN	2	Z01-23-29
24	16mm DIA FLAT WASHER	2	Z10-02-16
25	HYDRAULIC RAM (PULL DOWN)	1	Z01-01-AW25
26	1" G.B PLASTIC CAP	1	Z32-14
27	M12 x 50 HEX SET	1	Z26-086S
28	M12 LOCKNUT	1	Z23-12
29	12mm DIA FLAT WASHER	1	Z12-02-12
30	FILM PULL DOWN ARM ASSEMBLY	1	WD617-FPDA
31	RETAINING WASHER	1	WD60-859
32	ROLLER	1	WD60-866
33	1" DIA FLAT WASHER	1	Z10-02-30
34	6mm 'R' CLIP	1	Z36-03
35	PLATED COLLAR	1	WD617-025
36	TORSION SPRING	1	Z07-04
37	M8 LOCKNUT	2	Z23-06
38	DISPENSER GEARBOX COVER	1	WD617-GC1
39	20mm EXTERNAL CIRCLIP	2	Z28-520
40	M6 LOCKNUT	2	Z23-06
41	PLATE LATCH	1	WD617-019
42	PLASTIC HAND GRIP	1	Z32-16
43	M10 x 25mm SET	2	Z26-0611S
44	M20 x 2.5mm PITCH LOCKNUT	1	Z23-20
45	M12 HEX NUT	1	Z18-12
46	M12 x 40mm HEX SET	1	Z26-084S
47	LOWER LINK PINS	2	Z03-01-704
48	6mm DIA LINCH PINS	2	Z03-22-03
49	10mm DIA SPRING WASHER	2	Z12-02-10
50	M10 HEX NUT	1	Z18-10
51	M8 x 20mm HEX SET	2	Z26-030S

TANCO AUTOWRAP MODELL 280 ARC
SOLENOID VALVE & JUNCTION BOX ASSEMBLY

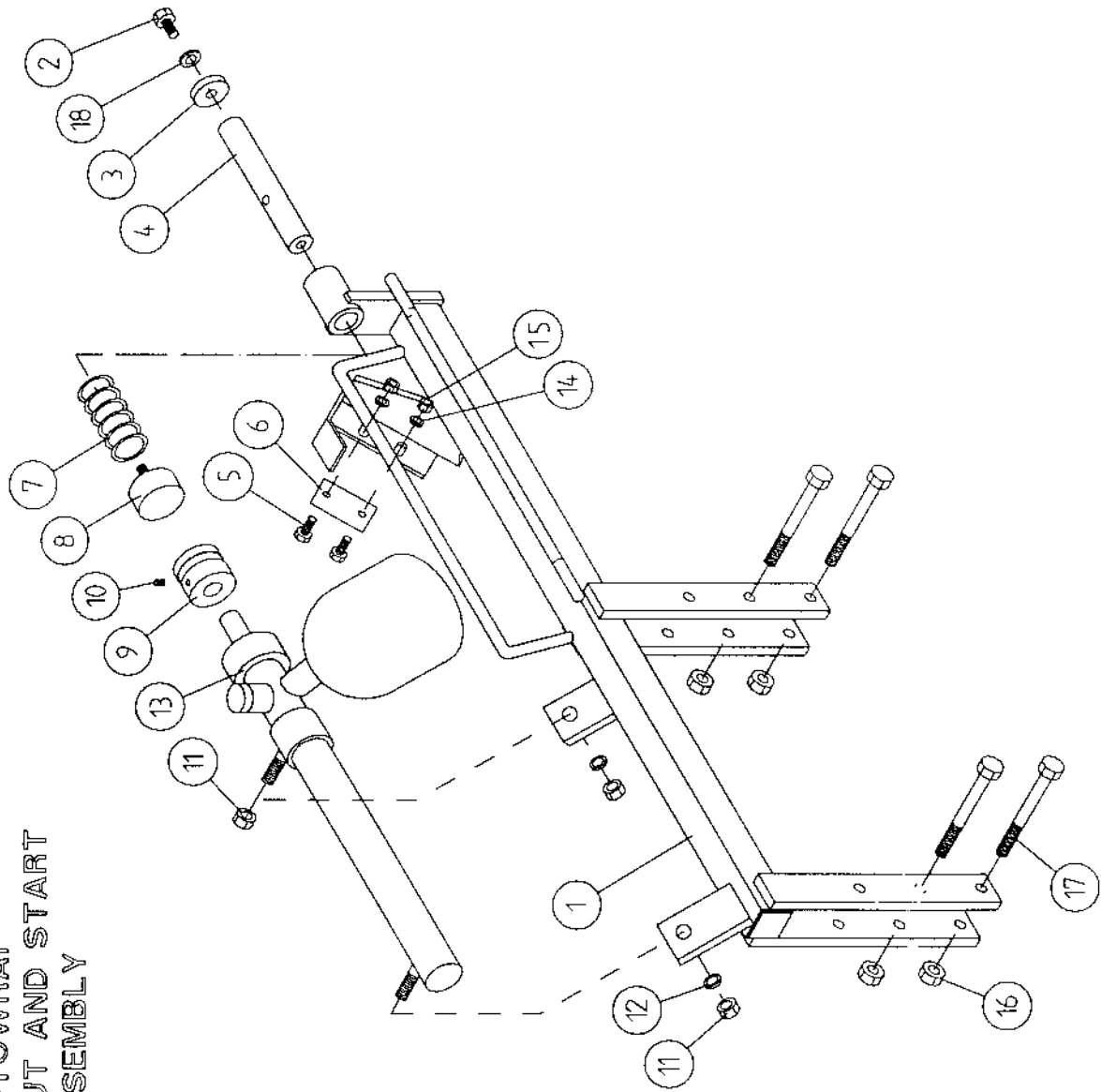


7

**TANCO AUTOWRAP 280-ARC MODEL
SOLENOID VALVE & JUNCTION BOX ASSY
PARTS LIST**

ITEM NO.	DESCRIPTION	QTY	PART NO.
1	DISPENSER MAST	1	WD617-DM
2	ROTATING BEACON	1	Z05-18
3	STEM C/W CABLE	1	Z05-181
4	M8 X 10mm GRUB SCREW	1	Z28-008
5	BEACON MOUNTING BRACKET	1	WD90-BM
6	RECEIVER	1	D606C-RR
7	RUBBER BUFFER	3	Z40-27
8	M6 LOCKNUT	7	Z23-06
9	JUNCTION BOX MOUNTING	1	ZLY-BRK
10	M8 X 100 HEX SET	3	Z26-0575
11	SPACER FOR VALVE	3	WD67-100
12	SOLENOID VALVE MOUNTING PLATE	1	WD63-1027
13	JUNCTION BOX MOUNTING BRACKET	1	WD623-1462
14	JUNCTION BOX	1	ZLY-280ARC
15	M4 CSK' SOCKET SCREW x 20mm	4	ZLY-S
16	M4 LOCKNUT	4	Z23-04
17	M10 HEX HD SET x 25mm	2	Z26-0611S
18	10mm DIA FLAT WASHER	2	Z10-02-10
19	M8 LOCKNUT	7	Z23-08
20	2 BANK SOLENOID VALVE	1	Z01-03-10-A2
21	VALVE & JUNCTION BOX COVER	1	WD623-VJC
22	OIL FILTER	1	Z01-24-08
22A	OIL FILTER ELEMENT	1	Z01-24-08E
23	FILTER MOUNTING BRACKET	1	WD63-1053
24	M8 HEX HD SET x 25mm	4	Z26-040S
25	8mm DIA FLAT WASHER	2	Z10-02-08
26	8mm DIA SPRING WASHER	2	Z12-02-08
27	3pt LINKAGE FRAME	1	WD63-MF1
28	STABILISING LEG ASSY	2	WD63-SLA
29	M12 HEX HD BOLT x 80mm	2	Z26-0901B
30	M12 LOCKNUTS	2	Z23-12
31	10mm DIA SPRING WASHER	2	Z12-02-10
32	M10 X 25mm SET	1	Z26-0611S
33	M10 LOCKNUT	1	Z23-10
34	RECEIVER MOUNTING BRACKET	1	WD67-148
35	RECEIVER MOUNTING	1	ZLY-RRB
36	M6 X 20mm SET	1	Z26-020S

TANCO AUTOWRAP
HYDRAULIC CUT AND START
MAIN ASSEMBLY

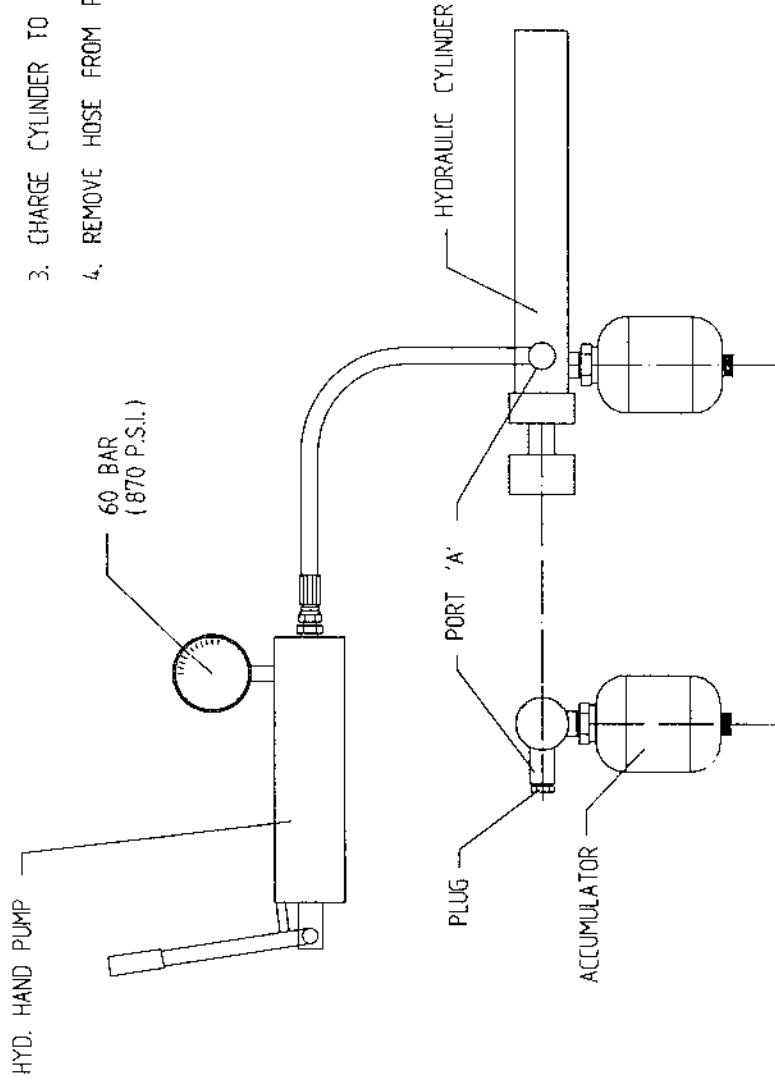


**TANCO AUTOWRAP
HYDRAULIC CUT & START UNIT
PARTS LIST**

ITEM NO.	DESCRIPTION	QTY	PART NO.
1	HYDRAULIC CUT & START MAIN FRAME	1	WD605H-MF1
2	M10 X 25 HEX SET	1	Z26-061S
3	LOCKING COLLAR	1	WD623-071
4	GRIPPER ROD	1	WD605H-13
5	M6 X 25 HEX SET	1	Z26-040S
6	BLADE	1	WD605-104
7	SPRING	1	Z07-49
8	GRIPPER PAD (RUBBER)	1	Z40-28
9	GRIPPER PAD	1	WD605H-15
10	M8 X 10 GRUB SCREW	1	Z28-008
11	M14 HEX NUT	3	Z18-14
12	14mm SPRING WASHER	2	Z12-02-14
13	CUT & START HYDRAULIC RAM ACCUM	1	Z01-01-AWH9
14	8mm FLAT WASHER	2	Z11-02-08
15	M8 LOCKNUT	2	Z23-08
16	M10 LOCKNUT	4	Z23-010
17	M10 X 75 HEX BOLT	4	Z26-069B
18	10mm DIA SPRING WASHER	1	Z12-02-10

TANCO AUTOWRAP - HYDRAULIC CUT AND START INSTRUCTIONS FOR RECHARGING HYDRAULIC CYLINDER

1. REMOVE PLUG FROM PORT "A" .
2. CONNECT HOSE FROM HYD. HAND PUMP TO PORT "A" .
3. CHARGE CYLINDER TO A PRESSURE OF 60 BAR (870 P.S.I.)
4. REMOVE HOSE FROM PORT "A" AND REFIT PLUG .



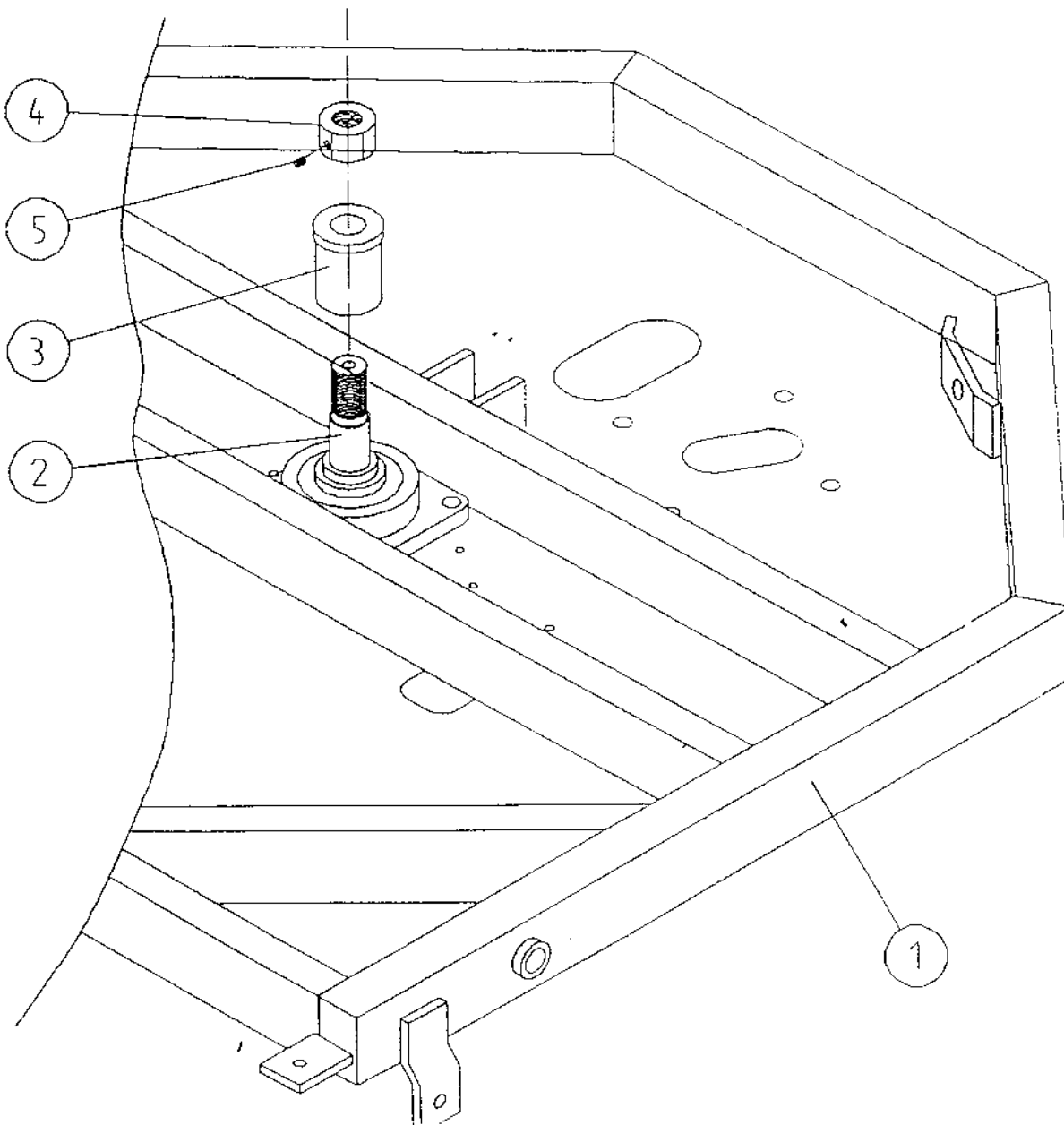
WD64 PL41

TANCO AUTOWRAP

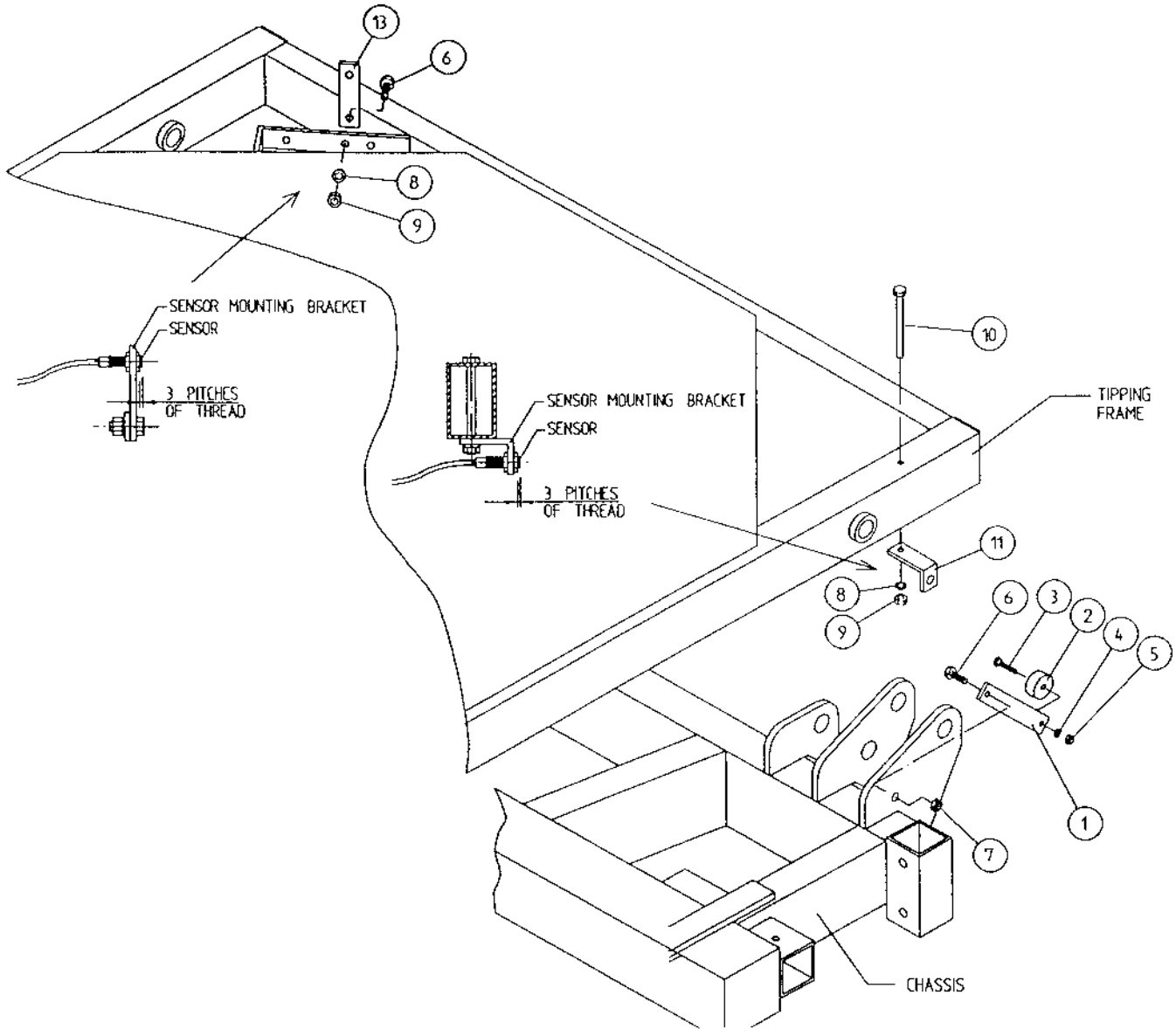
TURNTABLE LOCKING ARRANGEMENT

PARTS LIST

ITEM	DESCRIPTION	QTY	PART NO
1	UNDERSIDE OF TIPPING FRAME	1	WD67-TF
2	TURNTABLE CENTRE SHAFT	1	WD64-002
3	SPINDLE SPACER	1	WD67-SS
4	1 1/4" UNC HEX NUT	1	Z18-300
5	M8 GRUB SCREW X 6MM LONG	1	Z28-007



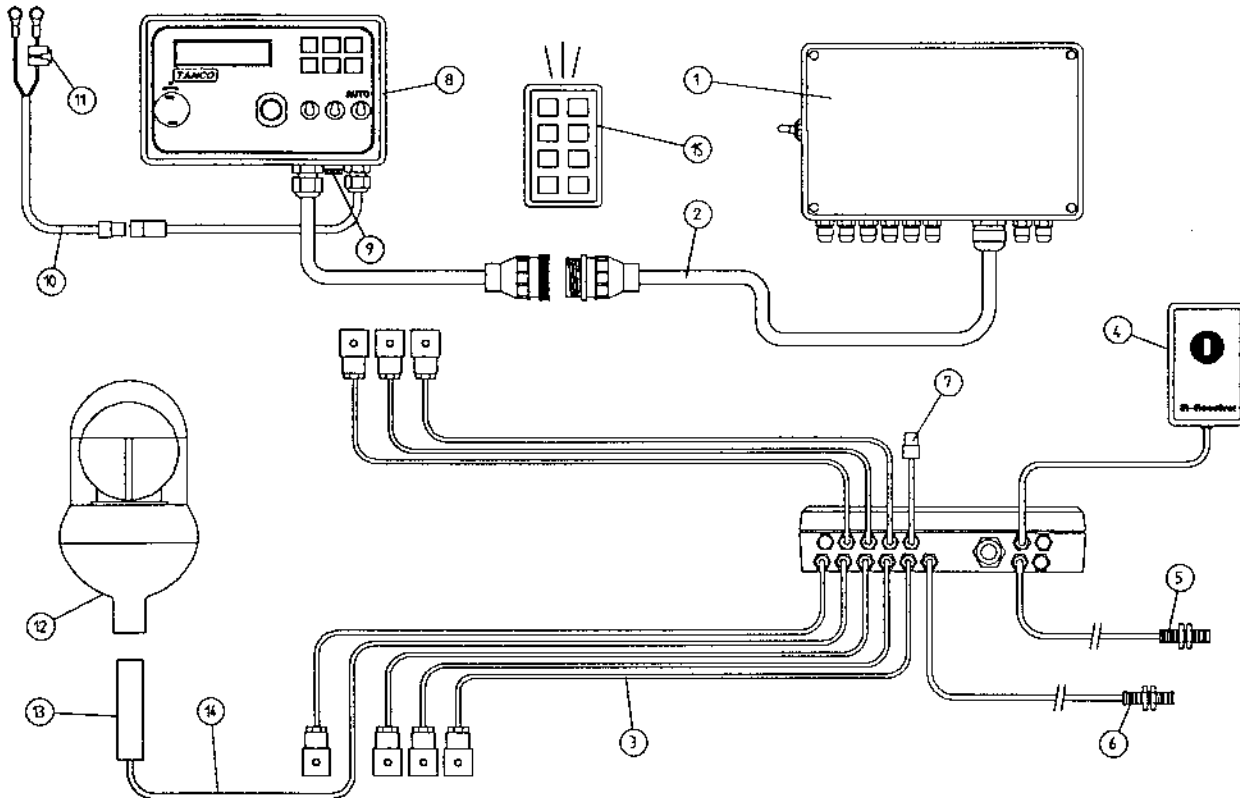
TANCO AUTOWRAP CUT AND START
SENSOR AND MAGNET MOUNTING BRACKETS



PARTS LIST

ITEM NO	DESCRIPTION	QTY	PART NO.
1	MAGNET MOUNTING BRACKET	1	WD605-165
2	MAGNET	1	D6034
3	M6 HEX HD. SET x 30mm LONG	1	Z26-022S
4	6mm DIA FLAT WASHER	1	Z12-02-06
5	M6 LOCKNUT	1	Z23-06
6	M8 HEX HD. SET x 25mm LONG	2	Z26-040S
7	M8 LOCKNUT (NYLOCK)	1	Z23-08
8	8mm DIA SPRING WASHER	2	Z12-02-08
9	M8 HEX NUT	2	Z18-08
10	M8 HEX HD. SET x 100mm LONG	1	Z26-057S
11	SENSOR MOUNTING BRACKET	1	WD605-58
12	SENSOR MOUNTING FLAT	1	WD605-164

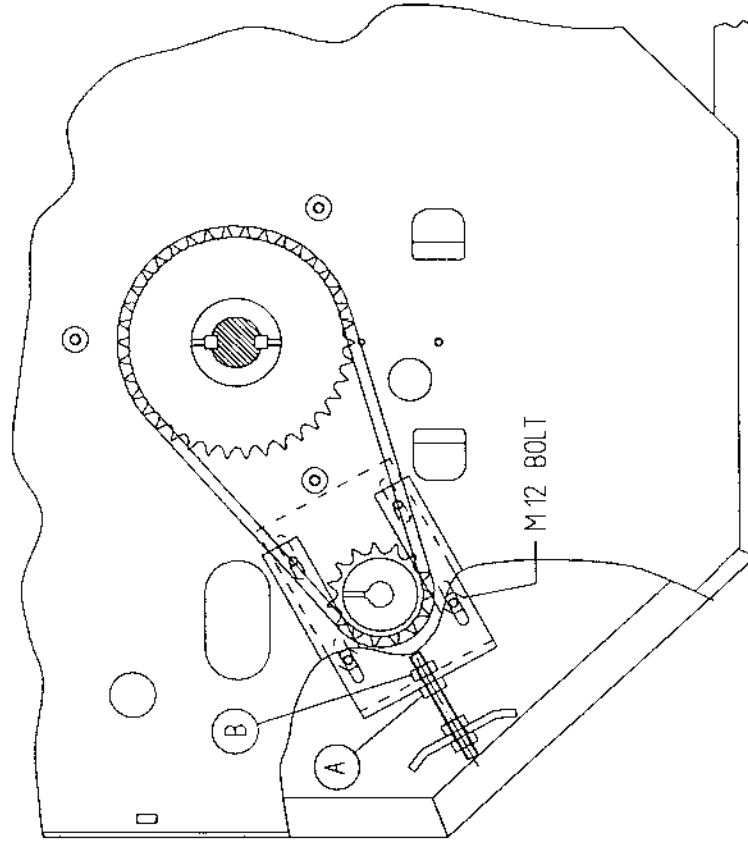
TANCO AUTOWRAP 280ARC MODEL ELECTRIC COMPONENTS



PARTS LIST

ITEM No.	DESCRIPTION	QTY.	PART No.
1	JUNCTION BOX	1	ZLY-280ARC
2	24 CORE INTERCONNECTING LEAD C/W CONNECTORS	1	ZLY-P02
3	LOOM FOR VALVE C/W HERSCHMAN	7	ZLY-P03
4	INFRA RED RECEIVER	1	D606C-RR
5	TIP SENSOR	1	ZLY-P05
6	ROTATE SENSOR	1	ZLY-P06
7	SYSTEM PRESSURE LEAD	1	ZLY-P07
8	CONTROL BOX (280ARC)	1	D606C-A
9	FUSE 16AMP	1	ZLY-P09
10	MAIN BATTERY LEAD	1	ZLY-P10
11	INLINE FUSE	1	ZLY-P11
12	ROTATING BEACON	1	Z05-18
13	STEM	1	Z05-181
14	ROTATING BEACON LEAD	1	ZLY-BL
15	INFRA RED REMOTE CONTROL TRANSMITTER	1	D606C-RT

TANCO AUTOWRAP TURNTABLE CHAIN DRIVE TENSIONING SYSTEM



TENSIONING PROCEDURE

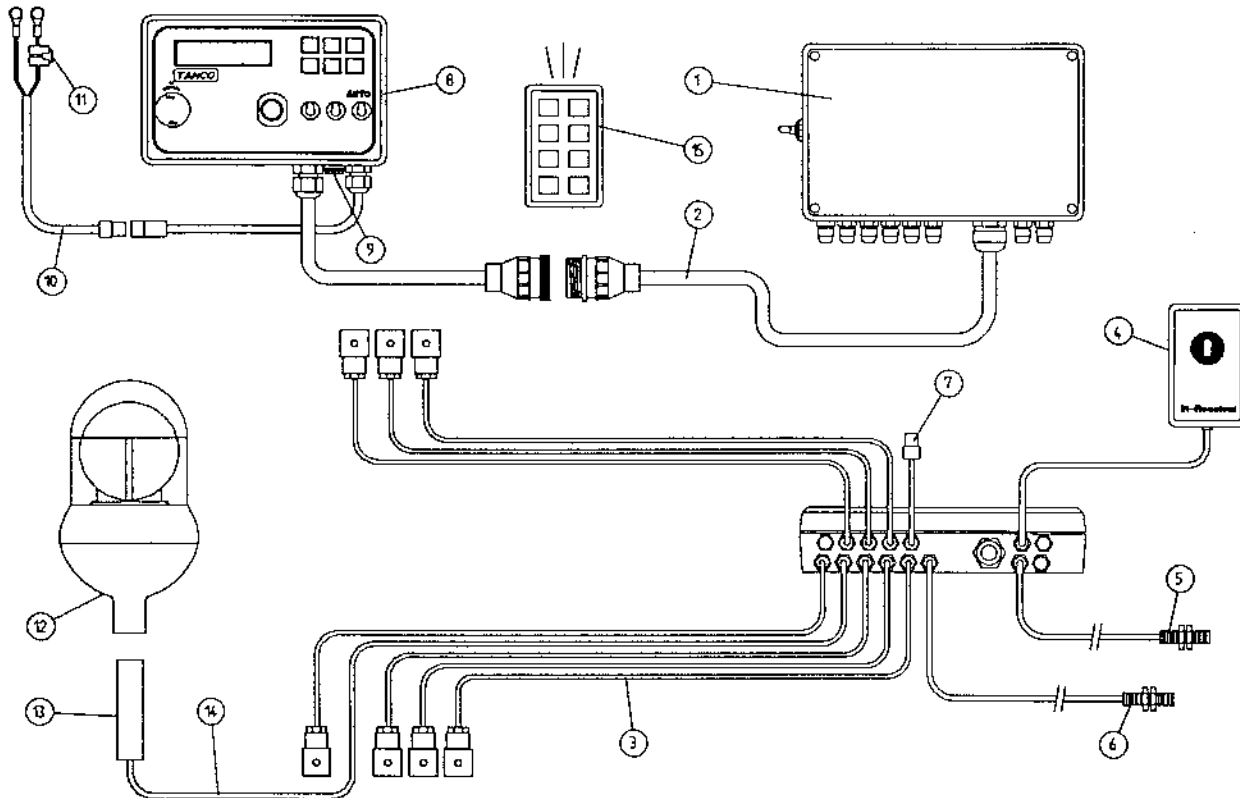
1. TIP UP MACHINE AND SUPPORT WITH A PROP.
2. REMOVE CHAIN GUARD.
3. SLACKEN M12 CLAMPING BOLTS SLIGHTLY.
4. SLACKEN LOCKNUT A.
5. ADJUST NUT B UNTIL THERE IS 8 mm - 10 mm DEFLECTION ON CHAIN.

NOTE WARNING:
DO NOT OVER TENSION CHAIN AS MOTOR WILL BE DAMAGED

6. TIGHTEN LOCKNUT A.
7. TIGHTEN M12 CLAMPING BOLTS.
8. REFIT CHAIN GUARD.

Fig. 8

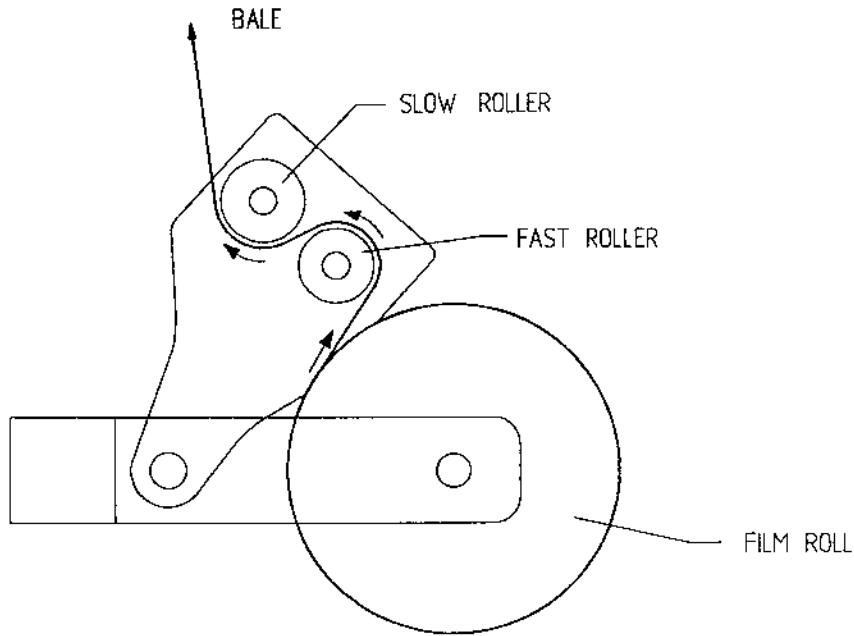
TANCO AUTOWRAP 280ARC MODEL ELECTRIC COMPONENTS



PARTS LIST

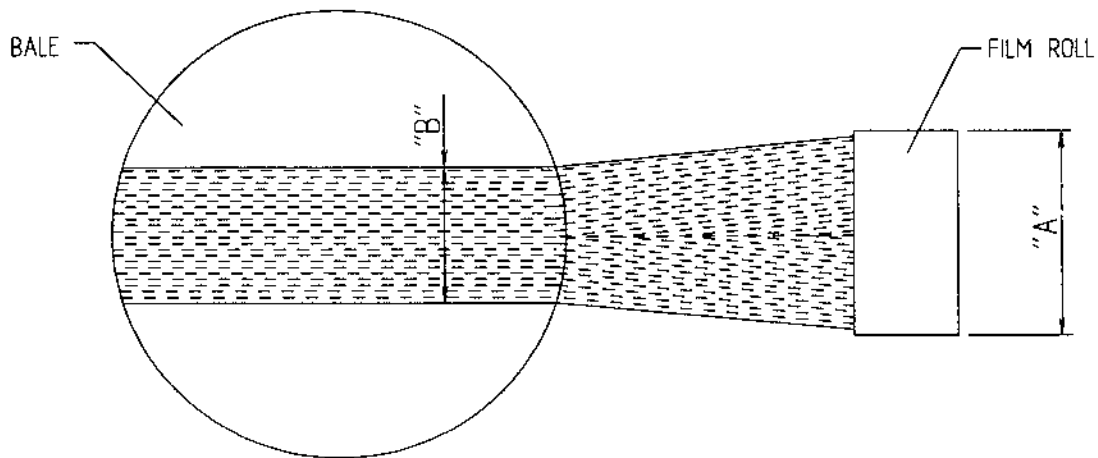
ITEM No.	DESCRIPTION	QTY.	PART No.
1	JUNCTION BOX	1	ZLY-280ARC
2	24 CORE INTERCONNECTING LEAD C/W CONNECTORS	1	ZLY-P02
3	LOOM FOR VALVE C/W HERSCHMAN	7	ZLY-P03
4	INFRA RED RECEIVER	1	D606C-RR
5	TIP SENSOR	1	ZLY-P05
6	ROTATE SENSOR	1	ZLY-P06
7	SYSTEM PRESSURE LEAD	1	ZLY-P07
8	CONTROL BOX (280ARC)	1	D606C-A
9	FUSE 16AMP	1	ZLY-P09
10	MAIN BATTERY LEAD	1	ZLY-P10
11	INLINE FUSE	1	ZLY-P11
12	ROTATING BEACON	1	Z05-18
13	STEM	1	Z05-181
14	ROTATING BEACON LEAD	1	ZLY-BL
15	INFRA RED REMOTE CONTROL TRANSMITTER	1	D606C-RT

TANCO AUTOWRAP FILM THREADING DIAGRAM



FILM ADJUSTMENT

CENTRE OF FILM ROLL MUST BE IN LINE WITH CENTRE OF BALE AND MAST SHOULD BE VERTICAL.



FILM ROLL WIDTH "A"	FILM WIDTH ON END OF BALE "B"
500 mm	400 mm
750 mm	600 mm

Fig. 1

TANCO AUTOWRAP CONSTANT INDEXING

GEARBOX CHAIN DRIVE TENSIONING SYSTEM

CHAIN TENSIONING PROCEDURE

1. LOOSEN M10 BOLT SECURING CHAIN TENSIONER.
2. TENSION CHAIN BY ADJUSTING TENSIONER USING SPANNER IN DIRECTION OF ARROW "X" UNTIL SETTING OF 15"-20" IS REACHED.
3. RE-TIGHTEN M10 BOLT TO SECURE TENSIONER IN POSITION.

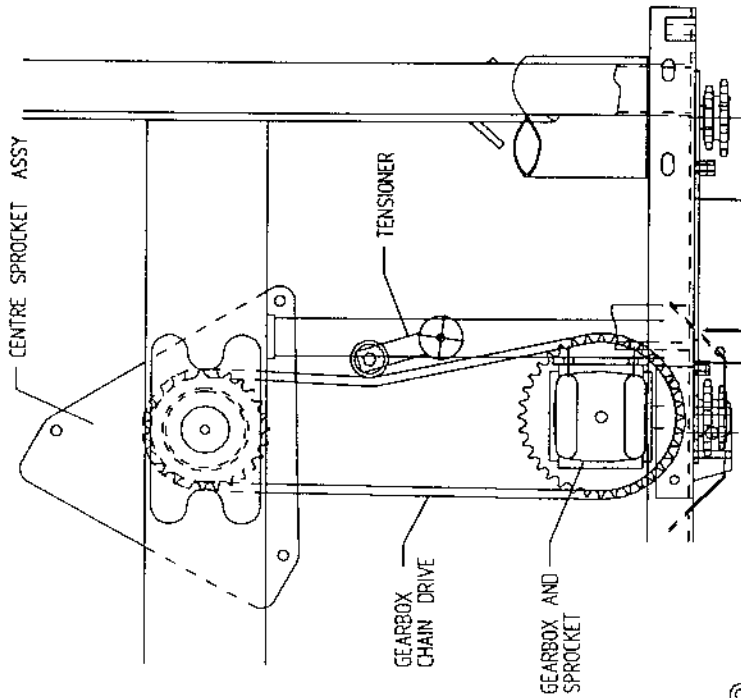
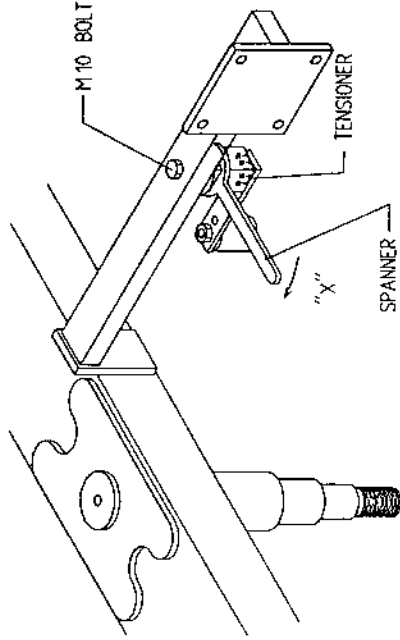


Fig. 2

ROLLER CHAIN DRIVE TENSIONING SYSTEM

CHAIN TENSIONING PROCEDURE

1. LOOSEN M14 BOLTS SECURING BEARING.
2. TENSION CHAIN BY LOOSENING LOCKING NUT AND TURNING ADJUSTER BOLT CLOCKWISE TO TAKE UP SLACK IN CHAIN. SECURE IN POSITION WITH LOCKING NUT. ENSURE EQUAL ADJUSTMENTS ARE MADE ON BOTH SIDES.
3. RE-TIGHTEN M14 BOLTS SECURING BEARINGS TO 170 Nm. (125 FT. lbs.).

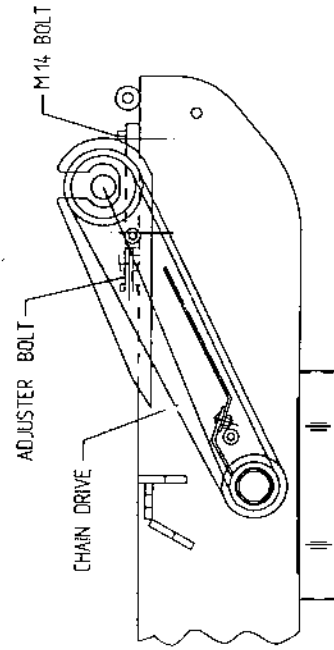


Fig. 3